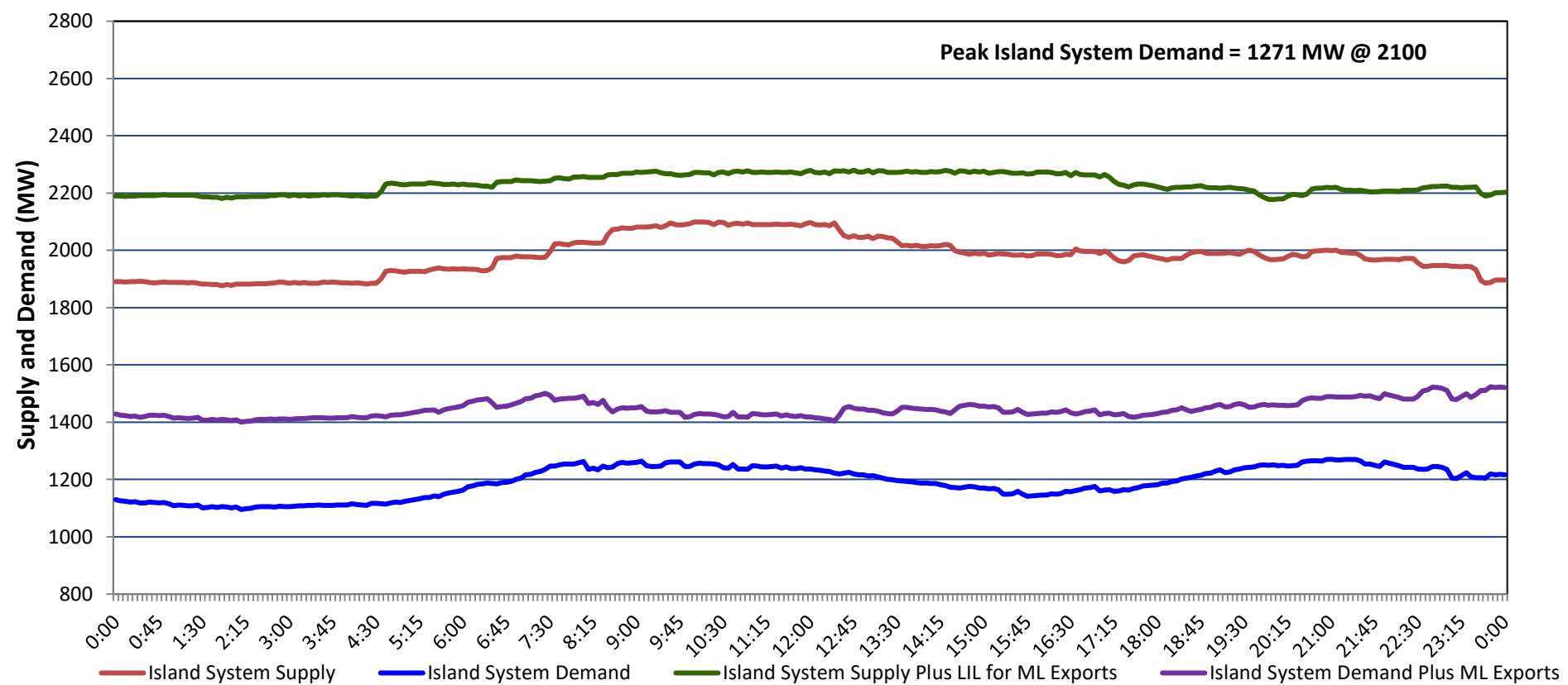


# Newfoundland Labrador Hydro (NLH) Supply and Demand Status Report Filed Monday, March 17, 2025

## Section 1 Island Interconnected System - Supply, Demand & Exports Actual 24 Hour System Performance For Saturday, March 15, 2025



### Island Supply Notes For March 15, 2025

- A** As of 0801 hours, February 22, 2025, Holyrood Unit 3 available at 130 MW due to forced derating (150 MW).  
**B** As of 0940 hours, March 10, 2025, Holyrood Unit 1 unavailable due to planned outage 105 MW (170 MW).  
**C** As of 0952 hours, March 11, 2025, Granite Canal Unit available at 32 MW due to forced derating (40 MW).

## Section 2 Island Interconnected System - Supply, Demand & Outlook

Sun, Mar 16, 2025	Island System Outlook <sup>2</sup>	Seven-Day Forecast	Island System Daily Peak Demand (MW)	
			Forecast <sup>8</sup>	Adjusted <sup>6</sup>
Island System Supply: <sup>4</sup> NLH Island Generation: <sup>3,7</sup> NLH Island Power Purchases: <sup>5</sup> NP and CBPP Owned Generation: LIL/ML Net Imports to Island: <sup>9</sup>	<b>2,002 MW</b> 1,495 MW 90 MW 220 MW 197 MW	Sunday, March 16, 2025	<b>1,365</b>	<b>1,269</b>
		Monday, March 17, 2025	1,225	1,131
		Tuesday, March 18, 2025	1,120	1,027
		Wednesday, March 19, 2025	1,225	1,131
		Thursday, March 20, 2025	1,260	1,165
		Friday, March 21, 2025	1,160	1,067
		Saturday, March 22, 2025	1,065	973
7-Day Island Peak Demand Forecast:	<b>1,365 MW</b>			

### Island Supply Notes For March 16, 2025

- Notes:**
1. Generation outages for running and corrective maintenance are included. These are not unusual for power system operations. They generally do not impact customer supply. Hydro schedules outages to system equipment whenever possible to coincide with periods when customer demands are low and sufficient supply reserves are available. However, from time to time equipment outages are necessary and reserves may be impacted.
  2. As of 0800 Hours.
  3. Gross continuous unit output.
  4. Gross output from all Island sources (including Note 3).
  5. NLH Island Power Purchases include: ML Imports, Exploits Generation, Rattle Brook, Star Lake, Wind Generation and capacity assistance (when applicable).
  6. Adjusted for interruptible load and the impact of voltage reduction when applicable.
  7. Due to limitations inherent in the design of combustion turbines, the output of combustion turbines may be reduced in the event that ambient temperatures exceed the threshold required for full rated output. This threshold is dependent on the design of each turbine.
  8. Does not include ML Exports.
  9. LIL Import sunk in the Island System. Actual LIL flows will be restricted by various system conditions including, but not limited to, Island Load, ML Exports and Avalon Unit status.

## Section 3 Island Peak Demand and Exports Information Previous Day Actual Peak and Current Day Forecast Peak

Sat, Mar 15, 2025	Island Peak Demand <sup>10</sup>	21:00	1,271 MW
	Exports at Peak		219 MW
	LIL Net Imports to Island		3,825 MWh
Sun, Mar 16, 2025	Forecast Island Peak Demand		1,365 MW

- Notes:** 10. Island Demand is supplied by NLH generation and purchases, LIL Imports plus generation owned and operated by Newfoundland Power and Corner Brook Pulp & Paper (Deer Lake Power, DLP).